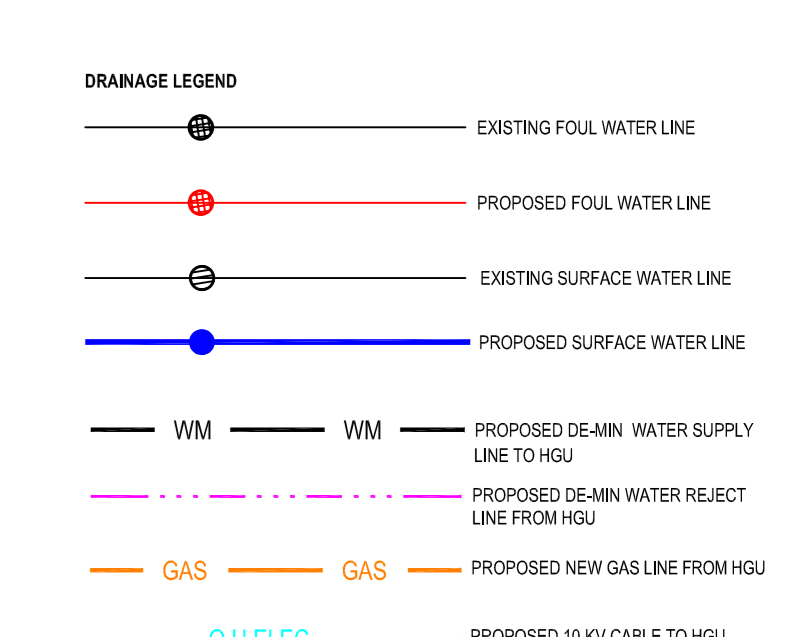


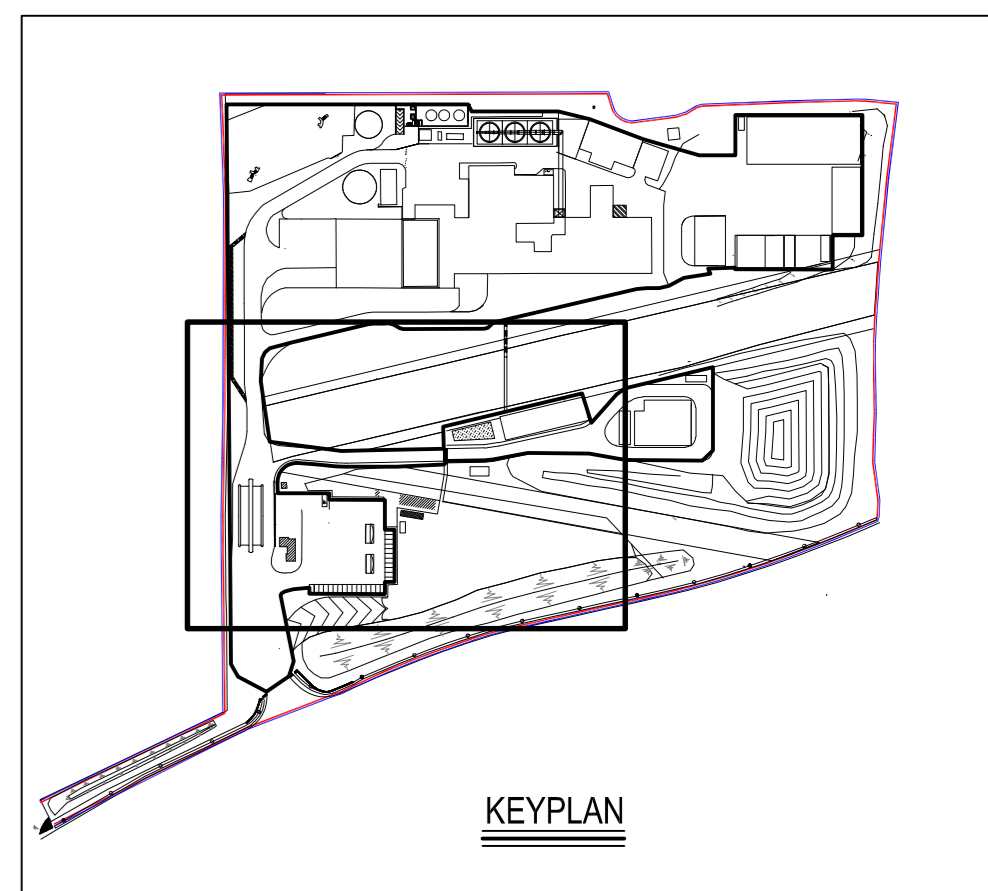
NOTES

- 1. FOR STANDARD NOTES REFER TO DRAWING NO. 29043/CD
- 2. THIS DRAWING IS TO BE READ IN CONJUNCTION WITH ALL RELEVANT ARCHITECTURAL SERVICES & MEA DRAWINGS.
- 3. ALL DIMENSIONS ARE IN METRES UNLESS OTHERWISE NOTED. LEVELS ARE STRUCTURAL LEVELS UNLESS OTHERWISE NOTED. THE DRAWING MUST NOT BE SCALED.



- Final Notes:**
1. The location of all existing services shall be confirmed prior to any excavation.
 2. Proposed foul water drainage pipework shall be Wavin UPVC pipework and fittings.
 3. Proposed foul water drainage designed to achieve a minimum self-cleaning velocity of 0.75m/s.
 4. All manhole covers shall be ductile iron with top covers least class D400 to BS EN 124.
 5. Access Junctions shall be Wavin 150mm Ø AJ with B125 ductile iron cover and shall be located in pedestrian areas only.
- Surface Water Drain Notes:**
1. Proposed surface water drainage designed to achieve a minimum self-cleaning velocity of 1.0m/s.
 2. Proposed drainage pipework shall be JFC-Twin Composite pipework and fittings.
 3. All manhole covers shall be ductile iron with top covers least class D400 to BS EN 124.
 4. The flow control device shall be a Hydro-Tech Optima vortex flow control device. Design head = 2m.
 5. All drainage channels in paved areas shall be ACC drainage channel and grating least class D400 with serrated end and all buried within road drains. The contractor shall include the ends of the head of each channel.
 6. Road gullies to be located to drain a maximum area of 200m². Gullies shall be sized to achieve a minimum wet area of 7000m².

MANHOLE REF.	INVERT LEVEL	COVER LEVEL
SWMH01	18.60m	18.70m
SWMH02	18.75m	18.85m
SWMH03	18.90m	19.00m
SWMH04	19.05m	19.15m
SWMH05	19.20m	19.30m
SWMH06	19.35m	19.45m
SWMH07	19.50m	19.60m
SWMH08	19.65m	19.75m
SWMH09	19.80m	19.90m
SWMH10	19.95m	20.05m
SWMH11	20.10m	20.20m
SWMH12	20.25m	20.35m
SWMH13	20.40m	20.50m
SWMH14	20.55m	20.65m
SWMH15	20.70m	20.80m
SWMH16	20.85m	20.95m
SWMH17	21.00m	21.10m
SWMH18	21.15m	21.25m
SWMH19	21.30m	21.40m
SWMH20	21.45m	21.55m
SWMH21	21.60m	21.70m
SWMH22	21.75m	21.85m
SWMH23	21.90m	22.00m
SWMH24	22.05m	22.15m
SWMH25	22.20m	22.30m
SWMH26	22.35m	22.45m
SWMH27	22.50m	22.60m
SWMH28	22.65m	22.75m
SWMH29	22.80m	22.90m
SWMH30	22.95m	23.05m
SWMH31	23.10m	23.20m
SWMH32	23.25m	23.35m
SWMH33	23.40m	23.50m
SWMH34	23.55m	23.65m
SWMH35	23.70m	23.80m
SWMH36	23.85m	23.95m
SWMH37	24.00m	24.10m
SWMH38	24.15m	24.25m
SWMH39	24.30m	24.40m
SWMH40	24.45m	24.55m
SWMH41	24.60m	24.70m
SWMH42	24.75m	24.85m
SWMH43	24.90m	25.00m
SWMH44	25.05m	25.15m
SWMH45	25.20m	25.30m
SWMH46	25.35m	25.45m
SWMH47	25.50m	25.60m
SWMH48	25.65m	25.75m
SWMH49	25.80m	25.90m
SWMH50	25.95m	26.05m



REV.	DESCRIPTION	BY	APPR.	DATE
E	ISSUED FOR PLANNING	DS	JMD	16/05/20
D	ISSUED FOR PLANNING	AD	NK	14/05/20
C	REISSUED FOR COMMENT	RN	NK	11/12/19
B	FOUL DRAINAGE REVISED	RN	NK	29/11/19
A	ISSUED FOR COMMENTS	VC	JMD	22/11/19

MEa McElroy Associates
 ENGINEERS TO INDUSTRY
 72 Hedding Road, Ballynaggin, DA. Tel: 060 9000 E Mail: info@mea.ie www.mea.ie
INDAVER
 INDAVER IRELAND
 200 JORDANVILLE
 CO. DUBLIN 15
 T: 01 456 4000
 F: 01 456 12000
SITE SUSTAINABILITY PROJECT
PROPOSED DRAINAGE LAYOUT
SHEET 3 OF 5

DESIGNED:	CHECKED:	APPROVED:
JMD	JMD	NK
DRAWN:	DATES:	SCALE:
VC	NOV 19	AS SHOWN @ AD
ORIGINAL:	29043/CD/016	REV: E

